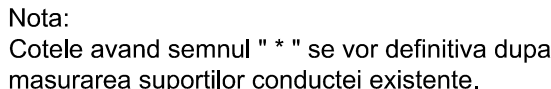
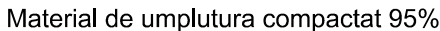


Scara 1:50



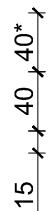
Scara 1:50



Scara 1:50



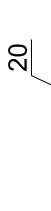
Scara 1:50



Scara 1:50



Scara 1:50



- 2

- **BETON :**

- BETON ARMAT- C25/30 - XC4+XF1;
 - CI 0.20;
 - CEM II A-S 32.5 N sau R;
 - S3;
 - GRANULATIE AGREGATE - Dmax. 16mm
- BETON SIMPLU - C12/15 - X0;
 - CI 1.0;
 - CEM II A-S 32.5 N sau R
 - S1-S3
 - GRANULATIE AGREGATE - Dmax. 22mm

- ARMATURA : OB37; PC52
- OTEL: S235J2

- CATEGORIA DE IMPORTANTA "C" conf. HG 766/1997

- CLASA DE IMPORTANTA "III" conform P100-1/2013;
- CONSTRUCTIA ESTE AMPLASATA IN ZONA SEISMICA CU ACCELERATIA TERENULUI PENTRU

PROIECTARE $a_g = 0.30g$ SI PERIOADA DE CONTROL(DE COLT)

Tc = 1.6 s - conform P100 - 1/2013;

- ÎNAINTE DE ÎNCEPEREA SAPATURILOR PENTRU FUNDATII SE VOR DEZAFECTA SAU DE VIA

EVENTUALELE REȚELE DE INSTALAȚII EXISTENTE ÎN ZONĂ



- DOMENIUL DE VERIFICARE A1;
- DIAMETRE ARMATURI : IN MM;
- DIMENSIUNI / COTE DESEN : IN CM;
- VALOAREA MINIMA A ACOPERIRII CU BETON A ARMATURII ESTE DE 5CM;

- TURNAREA BETONULUI IN FUNDATIE NU SE VA FACE PANĂ CÂND TOATE ELEMENTELE ÎNGLOBATE NU VOR FI MONTATE;
- PENTRU ASIGURAREA IMPERMEABILITĂȚII ȘI CONTINUITĂȚII ÎN PERETELE CUVEI SE VA MONTA UN PROFIL DE IMPERMEABILIZARE DIN PVC TIP SIKA SAU SIMILAR.

- SE RECOMANDA CA EXCAVATIILE GROSIERE SA SE EXECUTE IN RITM ALTERN, PE CAT POSIBIL INTR-O PERIOADA LIPSITA DE PRECIPITATII, IAR LUCRARILE SA FIE SUPRAEGHEATE DE GEOTEHNICIANI;
- ULTIMUL STRAT DE PE FUNDUL SAPATURII (CIRCA 20 CM) VA FI INDEPARTAT INAINTE DE TURNAREA STRATULUI DE EGALIZARE DIN BETON SIMPLU.

- TOC = COTA SUPERIOARA BETON ARMAT;
- CTA = COTA TEREN AMENAJAT;

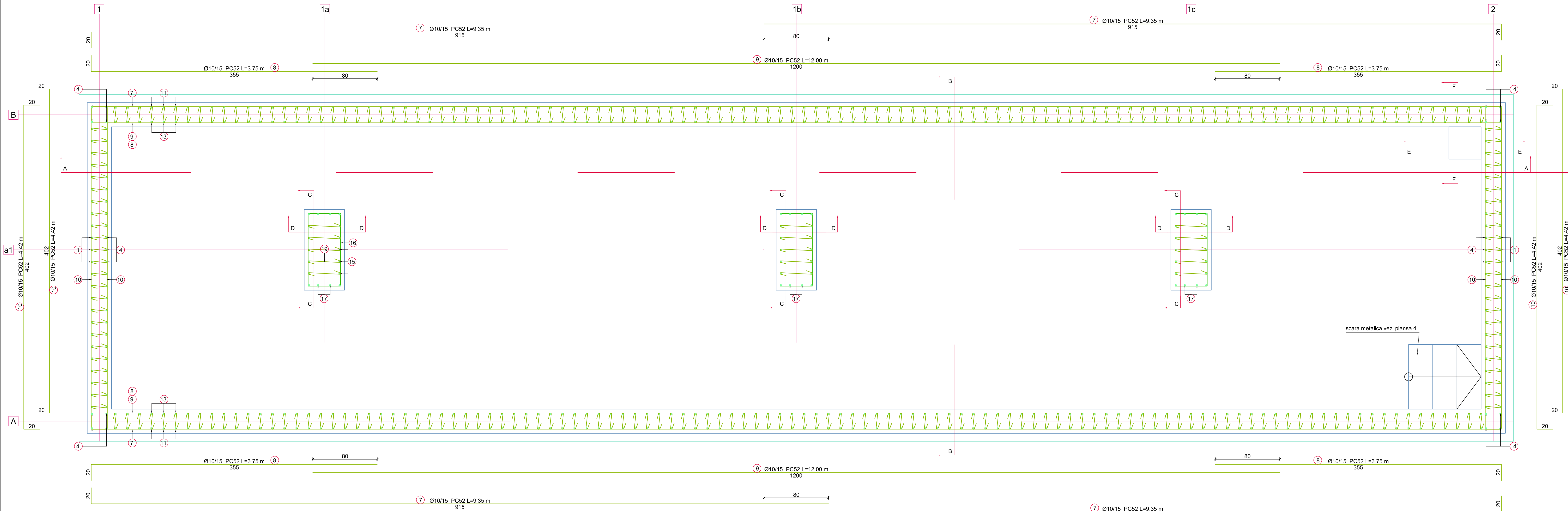
- **B.031.007-CS-LP-207_Plan General Amplasare - Civil**

02	Emis pentru Construire	03.2020	Ing.R. Brutaru	Ing.M.Voicu		
01	Emis pentru construire	03.2019	Ing.R. Brutaru	Ing.M. Scurtu		
00				Ing.M. Scurtu		
Rev.	Denumirea modificarii	Data	Intocmit	Verificat		
 <div>RIA ENGINEERING & CONSULTING 17005 BERTEA, SAT BERTEA, 512 100015, PLOIESTI, IL CARAGIALE 49 TELEFON: +40 244 471 659 email: office@riaengineering.ro</div>		 <div>CONPET S.A. Str. Anul 1848, nr. 1-3, 100559, PLOIESTI,</div>		<div>Nr. proiect:</div> <div>B.031.007</div>	<div>Desen - Nr.:</div> <div>CS-PLN-216</div>	<div>Rev.</div> <div>02</div>
Beneficiar:		CONPET S.A.		Specialitate Doc.:	Format	
Instalatie:		STATIE DE POMPARE POTLOGI		CIVIL	1.25-A2	
Scara:		Denumire desen				Faza
1 : 50		Plan Cuva de Retentie pentru Clavatura Pompe, Pag.1/4				PT+DE

PLAN ARMARE CUA DE RETENTIE PENTRU CLAVIATURA

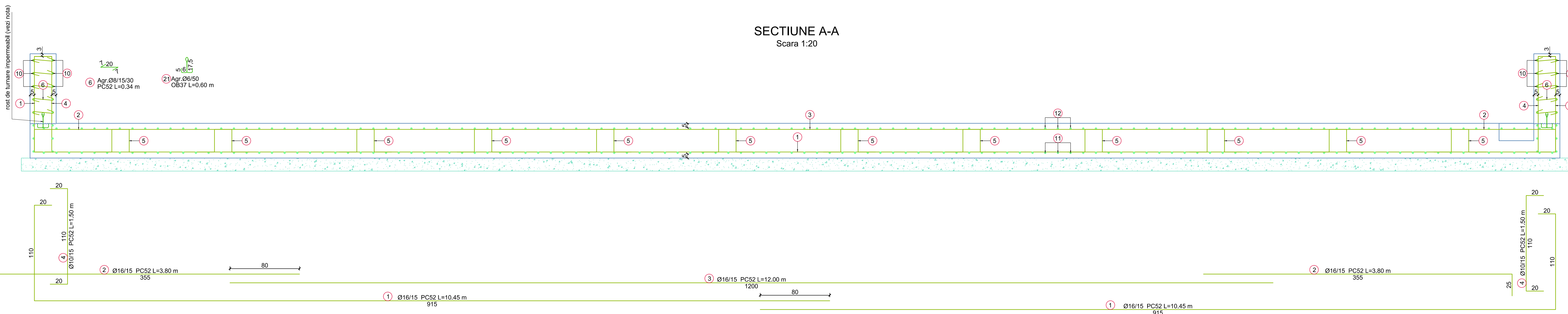
POMPE

Scara 1:20



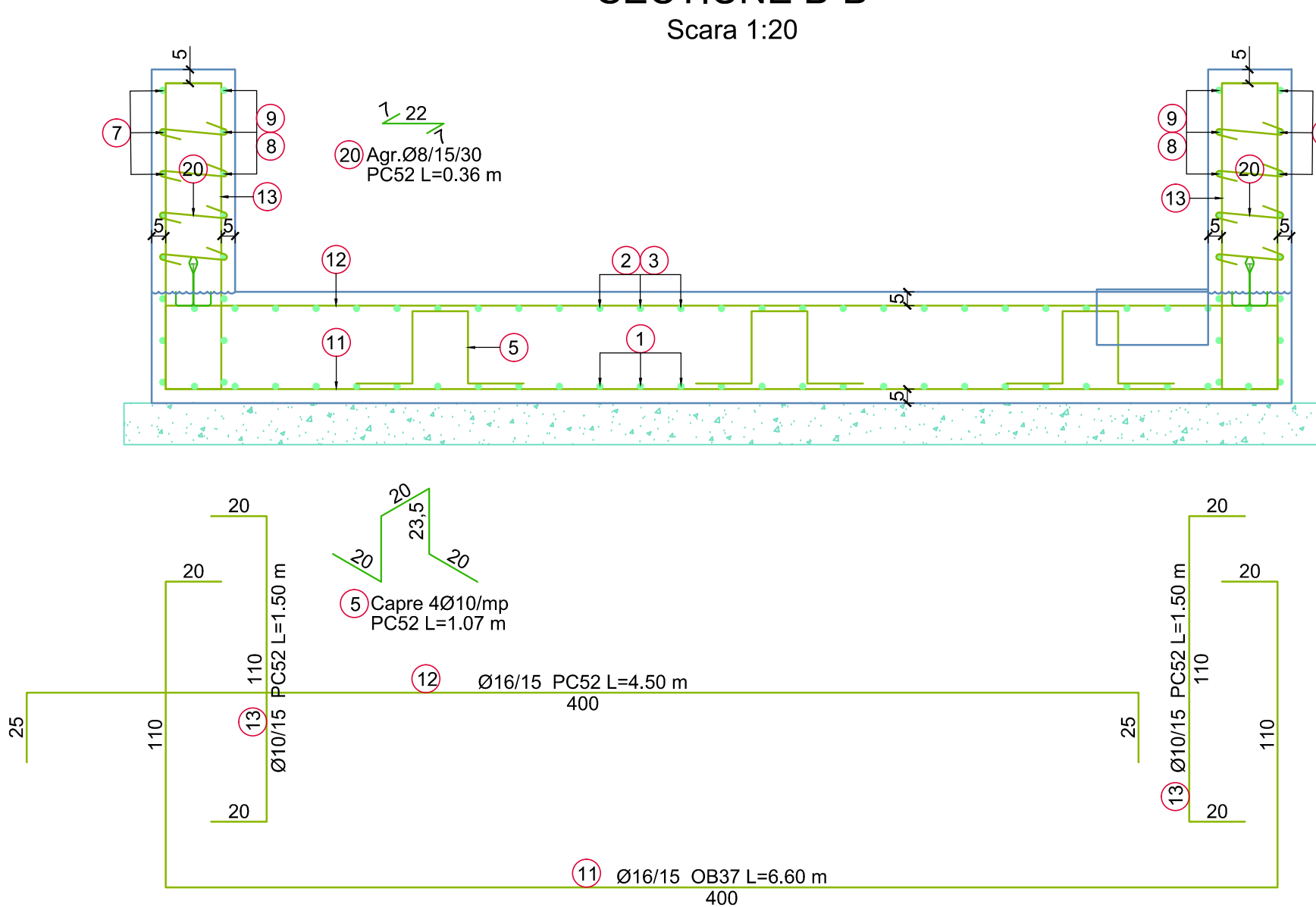
SECTIUNE A-A

Scara 1:20



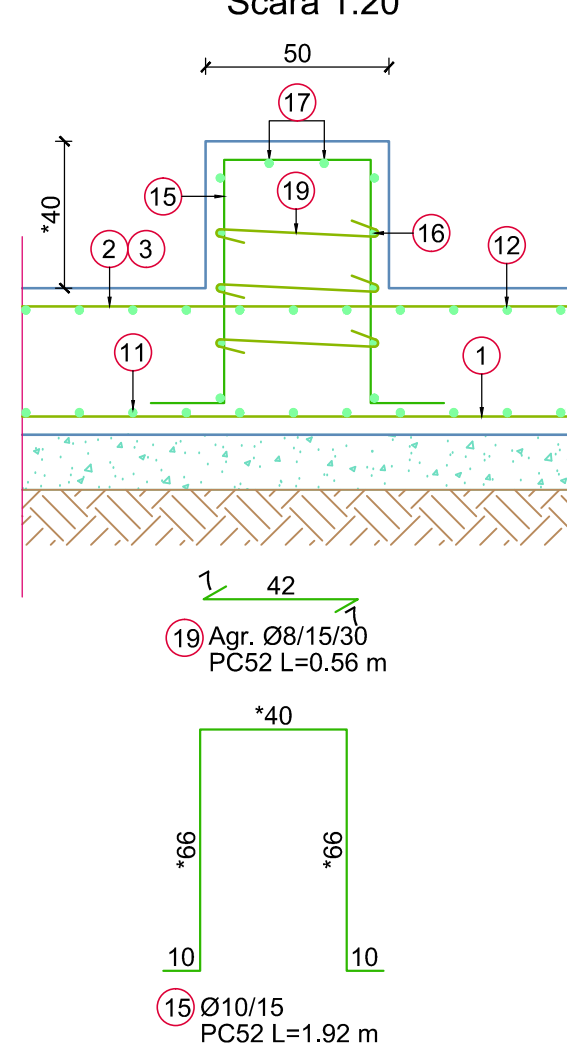
SECTIUNE B-B

Scara 1:20



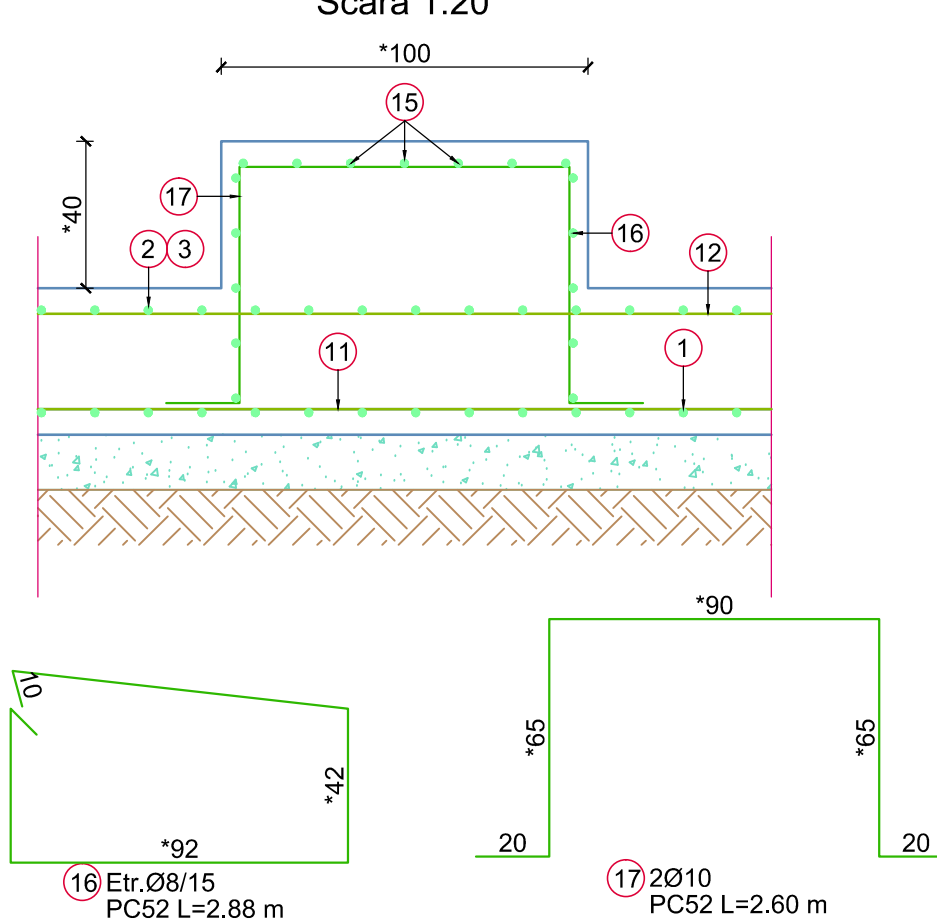
SECTIUNEA D-D

Scara 1:20



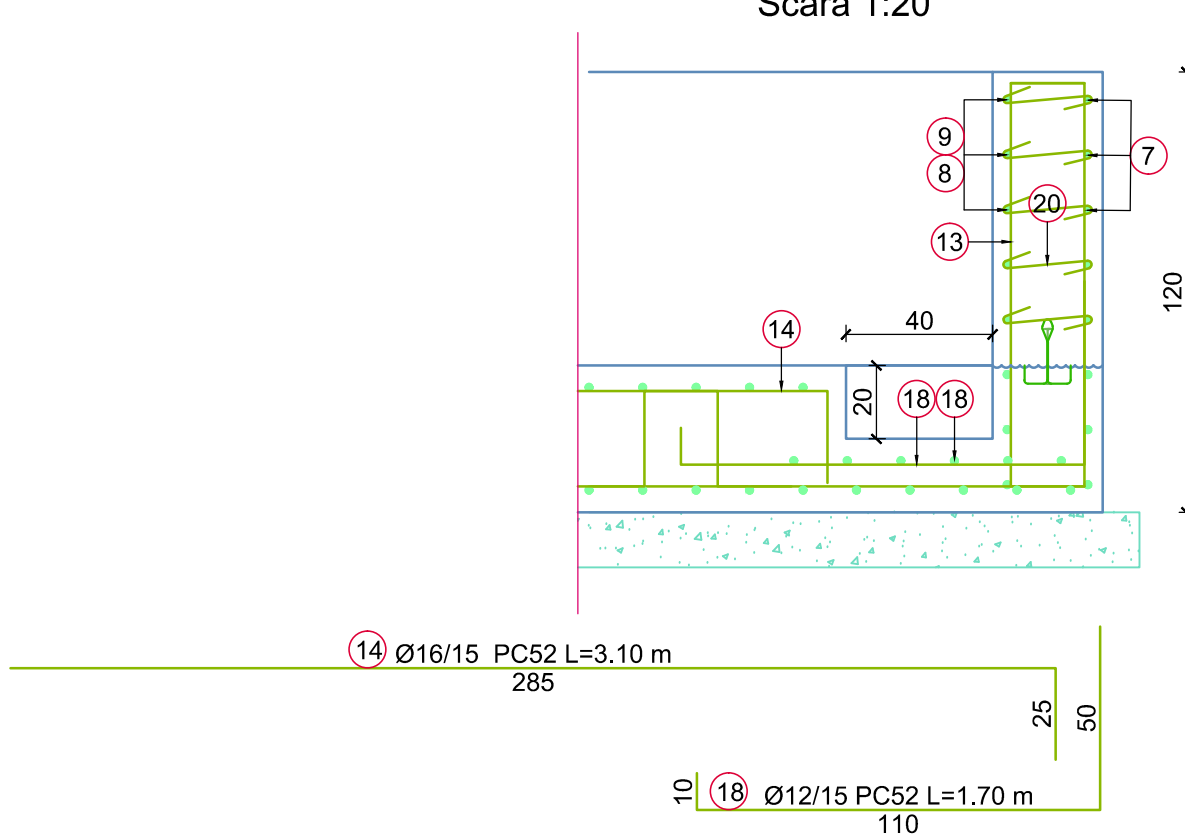
SECTIUNEA C-C

Scara 1:20



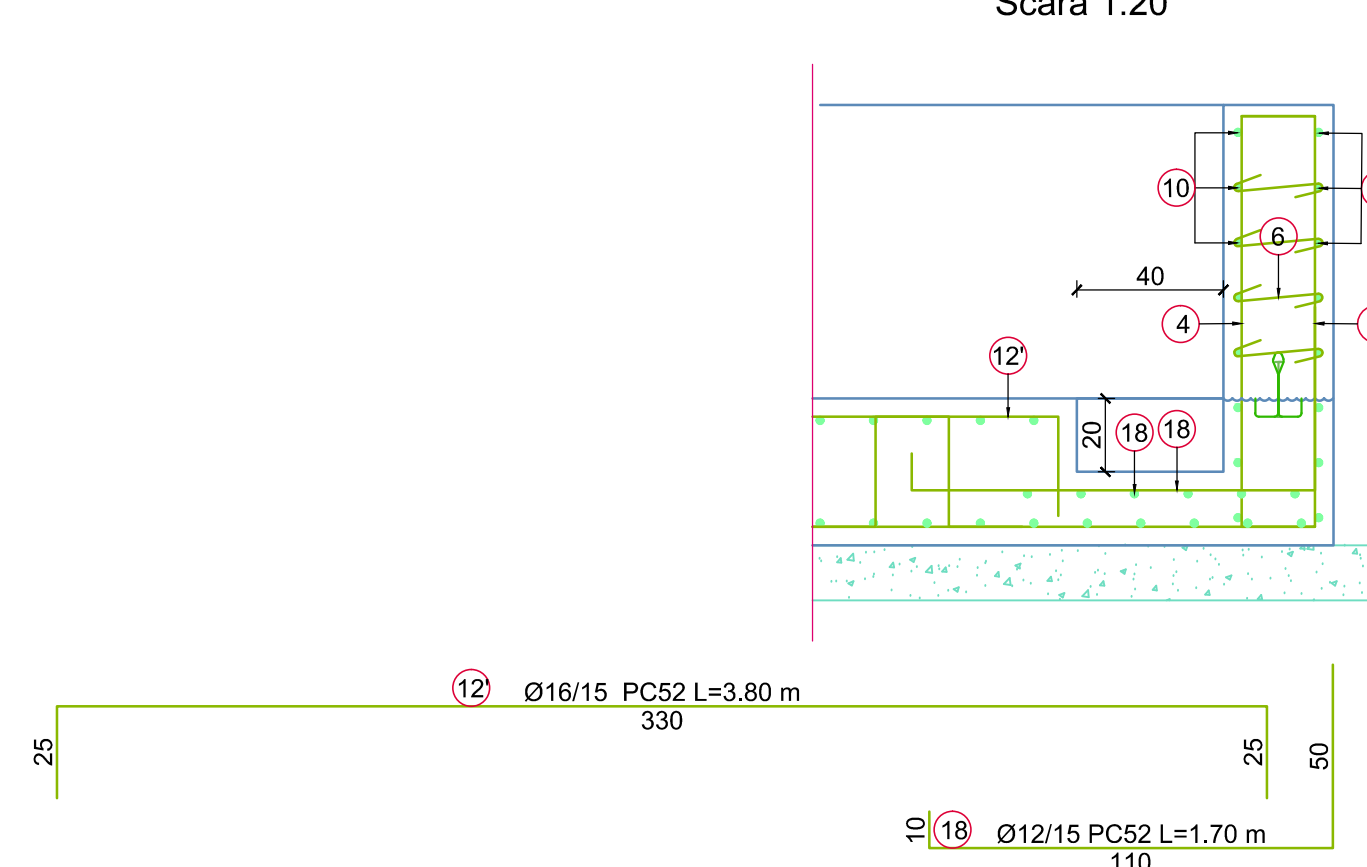
SECTIUNEA F-F

Scara 1:20



SECTIUNEA E-E

Scara 1:20



MATERIALE:

BETON:

BETON ARMAT: C25/30 - XC4+XF1;

CI Ø 20;

CEM II A-S 32.5 N sau R;

S3;

GRANULATIE AGREGATE - Dmax. 16mm

BETON SIMPLU - C12/15 - X0;

CI 10;

CEM II A-S 32.5 N sau R

S1-S3

GRANULATIE AGREGATE - Dmax. 22mm

ARMATURA: OB37; PC52

OTEL S235J2

NOTA:

CATEGORIA DE IMPORTANTA "C" conform HG 766/1997

CLASA DE IMPORTANTA "III" conform P100-1/2013;

CONSTRUCTIA ESTE AMPLASATA IN ZONA SEISMICA CU ACCELERATIA TERENULUI PENTRU

PROIECTARE ag = 0.30g SI PERIOADA DE CONTROL (DE COLT) Tc = 1.6 s - conform P100 - 1/2013;

INAINTE DE INCEPEREA SAPATULOR PENTRU FUNDATII SE VOR DEZAFECTA SAU DEVA

EVENTUALE RELE DE INSTALATII EXISTENTE IN ZONA;

DOMENIUL DE VERIFICARE A1;

DIAMETRE ARMATURII - IN MM;

DIMENSIUNI / COTE DESEN - IN CM;

VALOAREA MINIMA A ACOPERIRII CU BETON A ARMATURII ESTE DE 5CM;

TURNAREA BETONULUI IN FUNDATIE NU SE VA FACE PANA CAND TOATE ELEMENTELE INGLOBATE

NU VOR FI MONTATE;

PENTRU ASIGURAREA IMPERMEABILITATII SI CONTINUTATII IN PERETELE CUIVEI SE VA MONTA UN

PROFIL DE IMPERMEABILIZARE DIN PVC TIP SIKKA SAU SIMILAR.

ATENTIE !

SE RECOMANDA CA EXCAVATIILE GROSIERE SA SE EXECUTE IN RITM ALERT, PE CAT POSSIBIL

INTR-O PERIOADA LIPSITA DE PRECIPITATII, IAR LUCRARILE SA FIE SUPRAVEGHEATE DE

GEOTEHNICIENI;

ULTIMUL STRAT DE PE FUNDUL SAPATULUI (CIRCA 20 CM) VA FI INDEPARTAT INAINTE DE TURNAREA

STRATULUI DE EGALIZARE DIN BETON SIMPLU.

LEGENDA:

TOC = COTA SUPERIOARA BETON ARMAT;

CTA = COTA TEREN AMENAJAT;

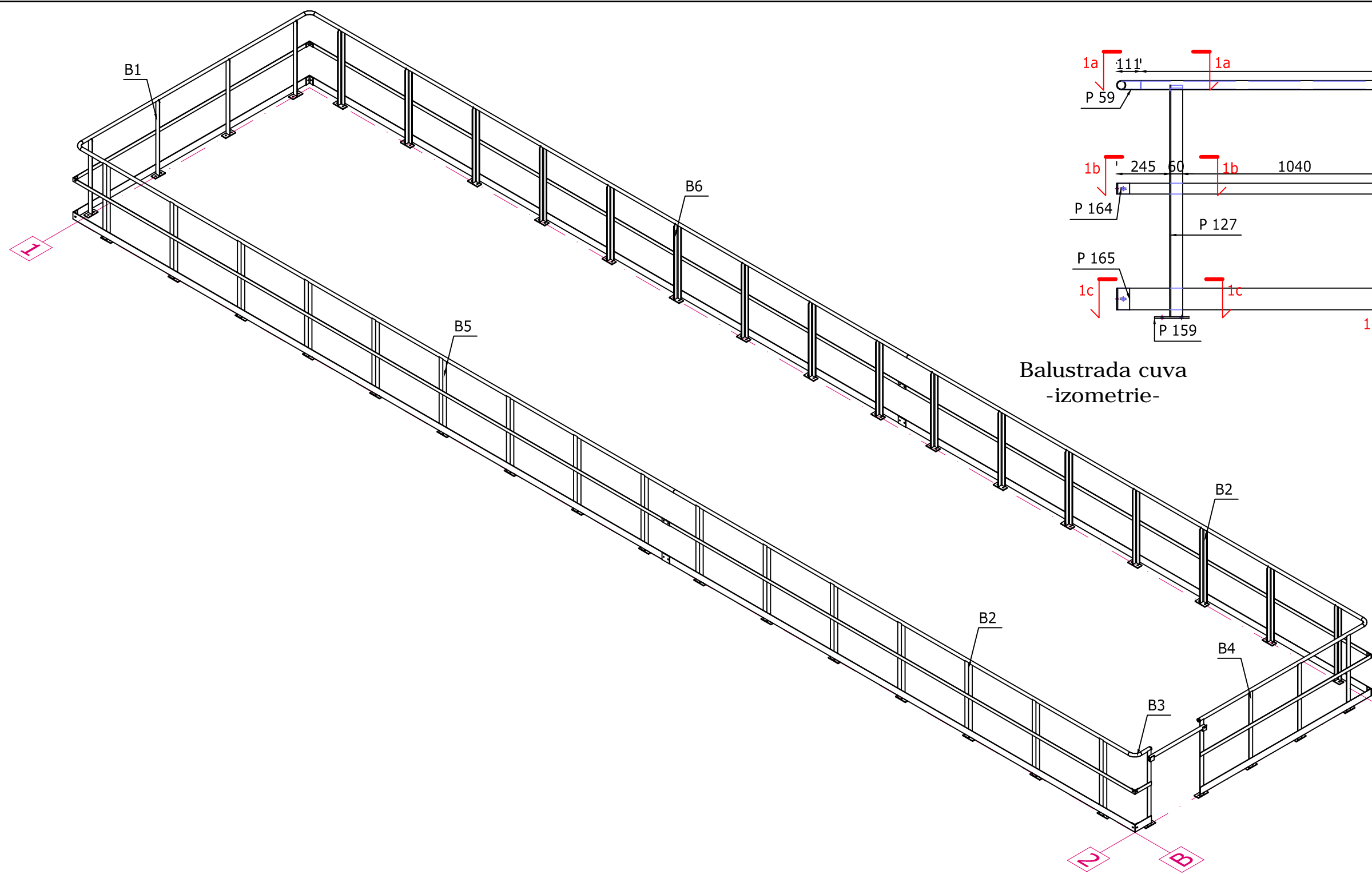
DOCUMENTE DE REFERINTA:

B.031.007-GS-LP-207_Plan General Amplasare - Civil

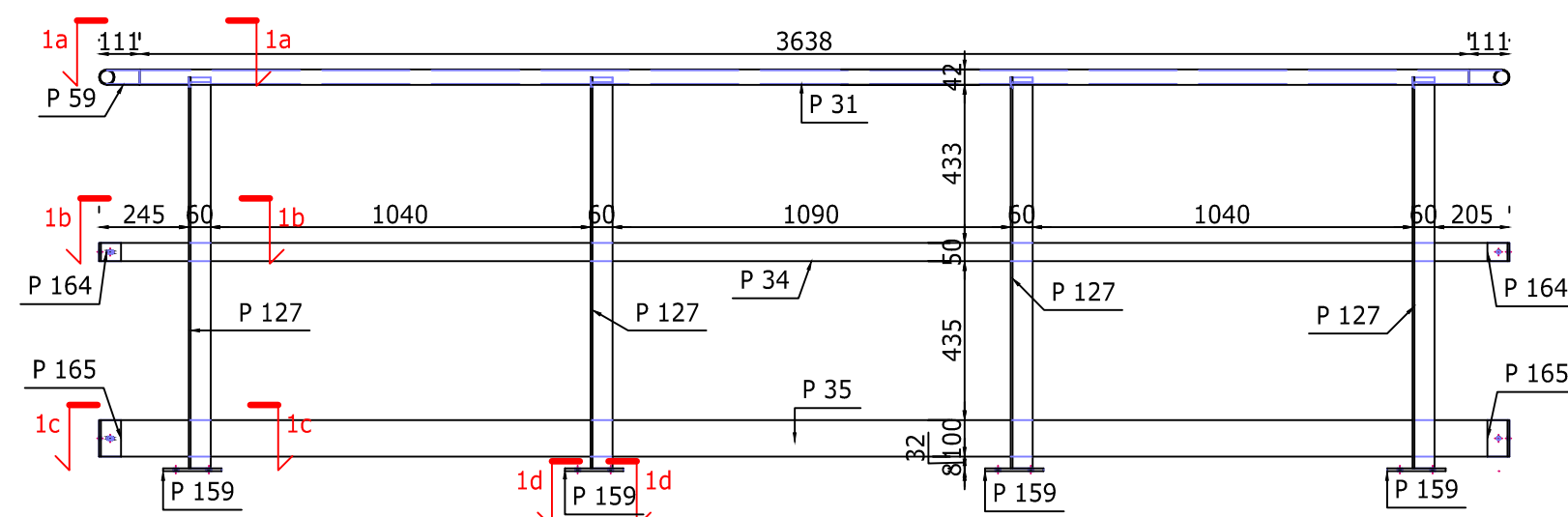
EXTRAS ARMARE

Marca	Diametru (mm)	Lungime (m)	Bucati	Lungimi totale				
				OB37	PC52			
				Ø6	Ø8	Ø10	Ø12	Ø16
1	16	10.45	48					501.6
2	16	3.8	48					182.4
3	16	12	24					288
4	10	1.5	64			96		
5	10	1.07	240			256.8		
6	8	0.34	96		32.64			
7	10	9.35	32			259.2		
8	10	3.75	32			120		
9	10	12	16			192		
10	10	4.42	32			141.4		
11	16	6.6	228					1505
12	16	4.5	111					499.5
13	16	3.8	3					11.4
13	10	1.5	228			342		
14	16	3.1	3					9.3
15	10	1.92	21			40.32		
16	8	2.88	15		43.2			
17	10	2.6	6			15.6		
18	12	1.7	6					10.2
19	8	0.56	27		15.12			
20	8	0.36	448		161.28			
21	6	0.6	90	54				
Lungime Ø (m)				54	252.24	1503	10.2	2997
Greutate pe metru linier (kg/m)				0.222	0.395	0.617	0.888	1.578
Greutate Ø (kg)				11.99	99.6348	927.8	9.058	4729
Greutate TOTALA (kg)						5778		

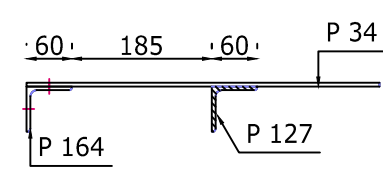
02	Emis pentru Construire	03.2020	Ing. R. Brutaru	Ing. M. Voicu
01	Emis pentru construire	03.2019	Ing. R. Brutaru	Ing. M. Scurtu
00	Prima revizie	12.2018	Ing. R. Brutaru	Ing. M. Scurtu
Rev.	Denumirea modificarilor	Data	Intocmit	Verificat
		Nr. proiect:	Desen - Nr.:	Rev.
		B.031.007	CS-PLN-216	02
Beneficiar:	COMPET S.A.	Specialitate Doc.:	Format	
Instalatie:	STATIE DE POMPARE POTLOGI	CIVIL	Ad-o	
Scara:	Denumire desen		Faza	
1:20	Plan Cua de Retentie pentru Claviatura Pompe,	Pag.2/4		PT-DE



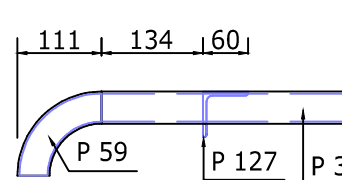
Balustrada B1 - vedere laterala
scara 1:20



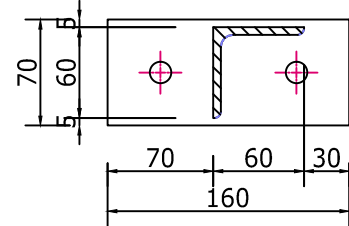
Sectioniune 1b-1b
scara 1:10



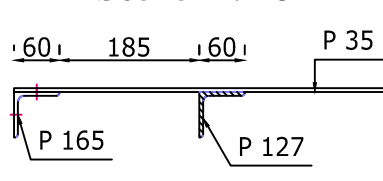
Sectioniune 1a-1a
scara 1:10



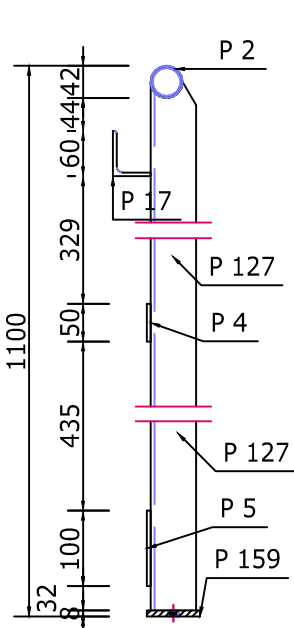
Sectioniune 1d-1d
scara 1:5



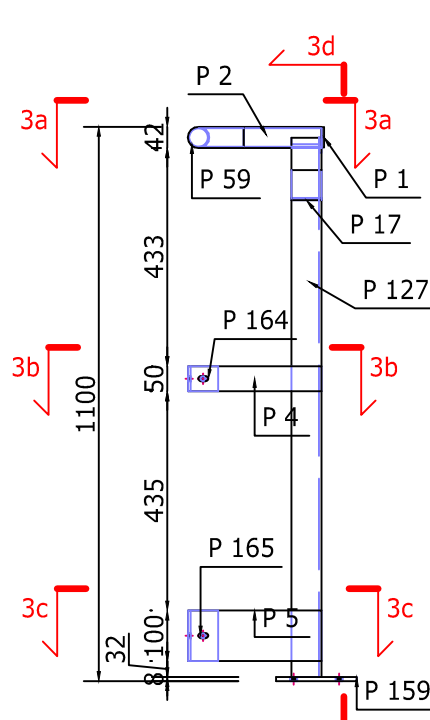
Sectioniune 1c-1c
scara 1:10



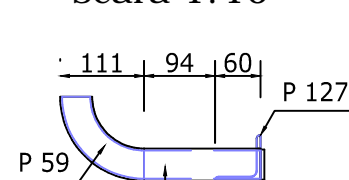
Sectioniune 3d-3d
scara 1:10



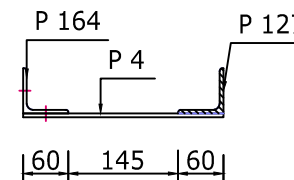
Balustrada B2 - vedere laterala
scara 1:15



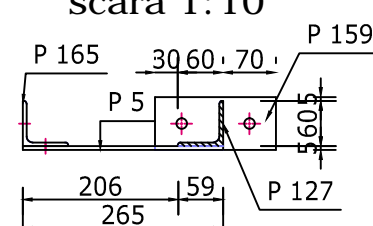
Sectioniune 3a-3a
scara 1:10



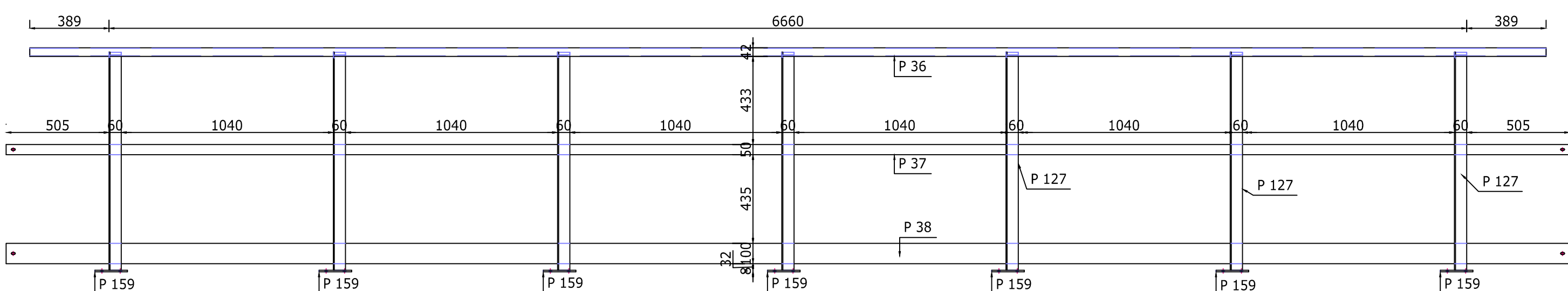
Sectioniune 3b-3b
scara 1:10



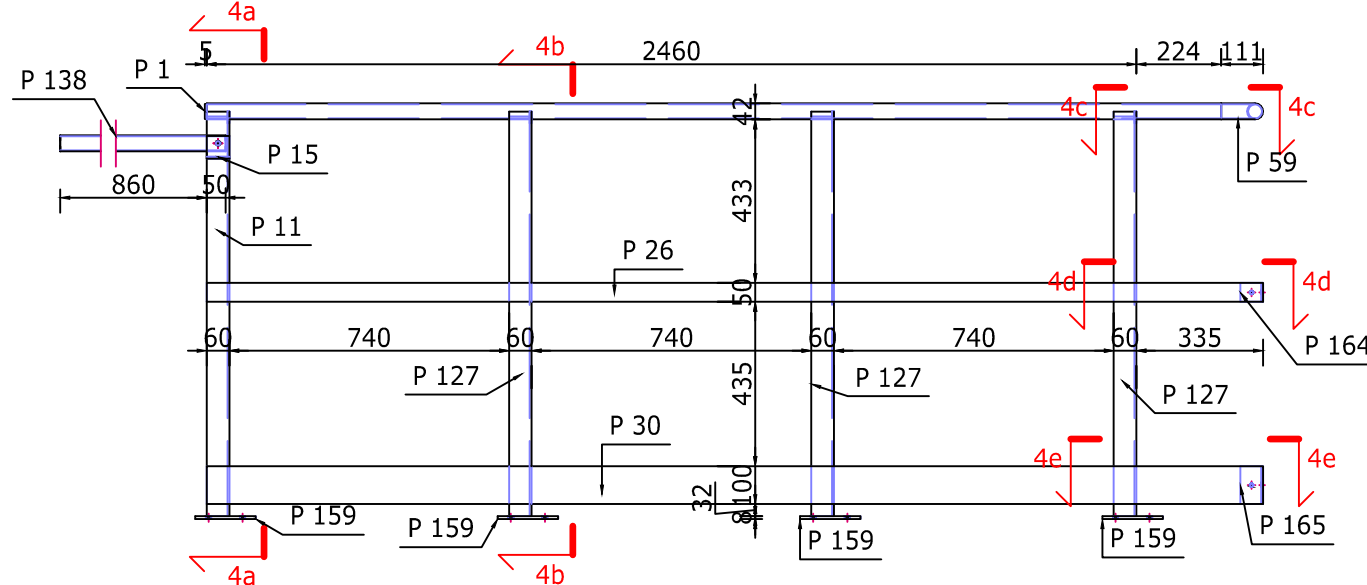
Sectioniune 3c-3c
scara 1:10



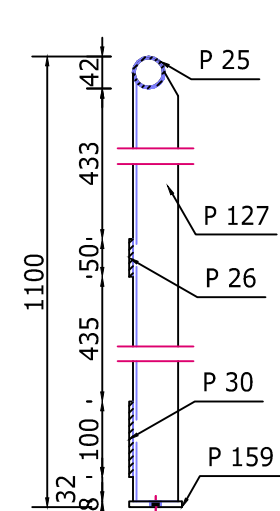
Balustrada B2 - vedere laterala
scara 1:20



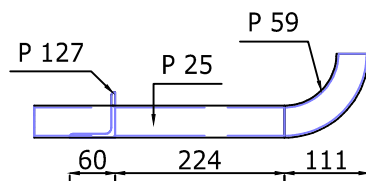
Balustrada B4 - vedere laterala
scara 1:20



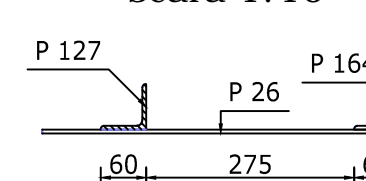
Sectioniune 4b-4b
scara 1:10



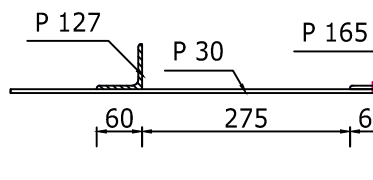
Sectioniune 4c-4c
scara 1:10



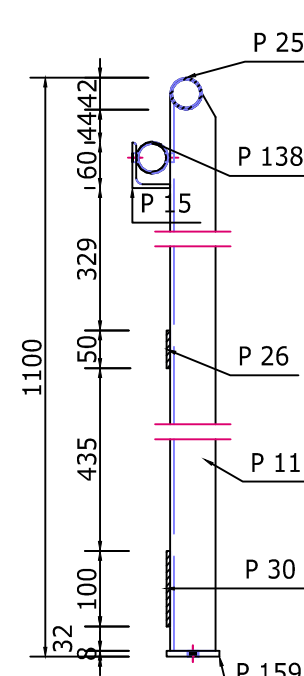
Sectioniune 4d-4d
scara 1:10



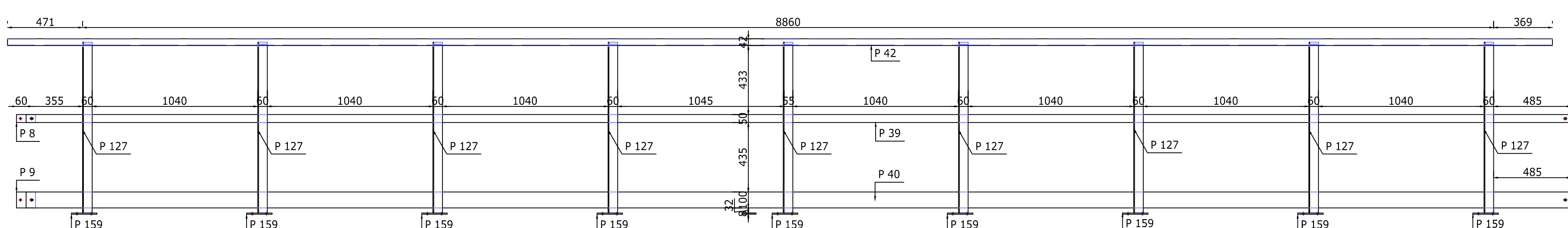
Sectioniune 4e-4e
scara 1:10



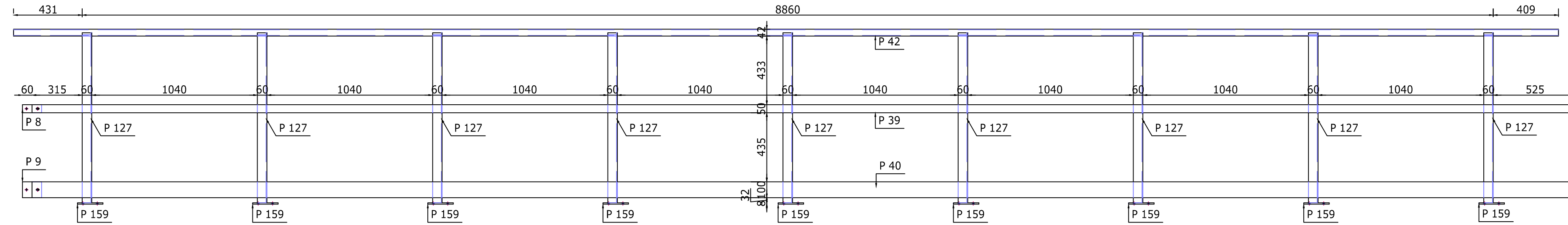
Sectioniune 4a-4a
scara 1:10



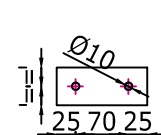
Balustrada B6 - vedere laterala
scara 1:20



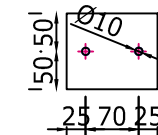
Balustrada B6 - vedere laterala
scara 1:20



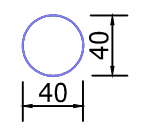
P 8: Pb 50x5 120mm
Scale: 1:10



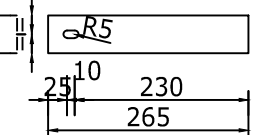
P 9: Pb 100x5 120mm
Scale: 1:10



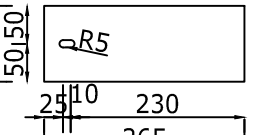
P 1: Plate 5x40x40mm
Scale: 1:5



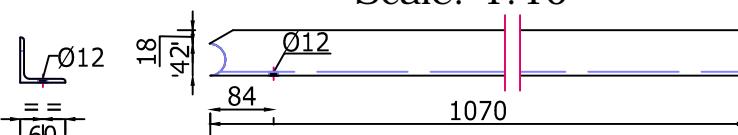
P 4: Pb 50x5-265mm
Scale: 1:10



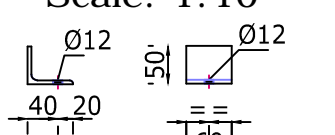
P 5: Pb 100x5-265mm
Scale: 1:10



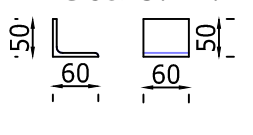
P 11: L60x60x5-1071mm
Scale: 1:10



P 15: L60x60x5-60mm
Scale: 1:10



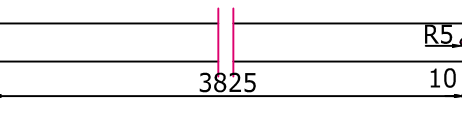
P 17: L 60x60x5-60mm
Scale: 1:10



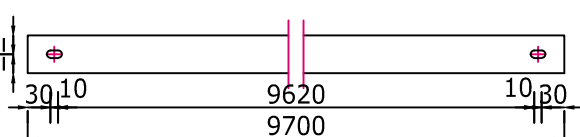
P 35: Pb 100x5-3860mm
Scale: 1:10



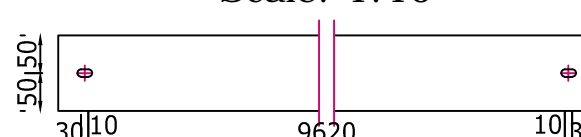
P 34: Pb 50x5 3860mm
Scale: 1:10



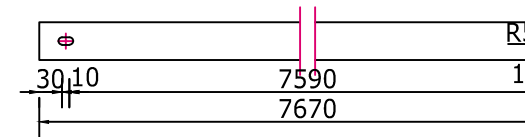
P 39: Pb 50x5-9700mm
Scale: 1:10



P 40: Pb 100x5-9700mm
Scale: 1:10



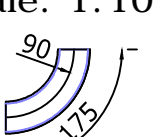
P 37: Pb 50x5 7670mm
Scale: 1:10



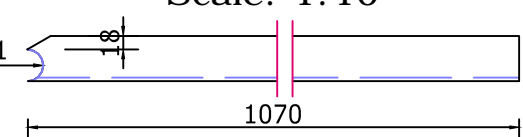
P 38: Pb 100x5-7670mm
Scale: 1:10



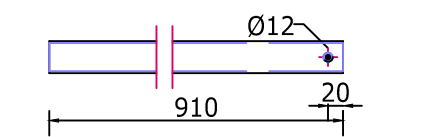
P 59: Tv Ø42x2.6-175mm
Scale: 1:10



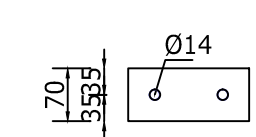
P 127: L 60x60x5-1071mm
Scale: 1:10



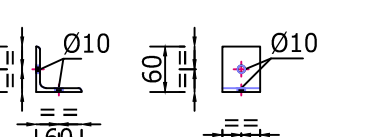
P 138: Tv Ø42x2.6-910mm
Scale: 1:10



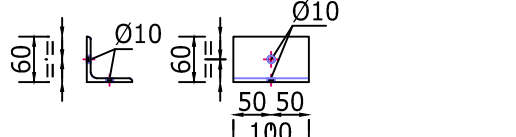
P 159: Plate 8x70x160mm
Scale: 1:10



P 164: L60x60x5-50mm
Scale: 1:10



P 165: L 60x60x5-100mm
Scale: 1:10



Extras de materiale balustrada										
Pos.	Name	Material	Stas prosus	Pcs.	Dimensiuni (mm)		Greutate			Total
							kg/pcs	kg/m		
P1	Placa	S235	SR EN 10029-2011	4	5	40	40	0,06	-	0,25
P2	Tv Ø42x2,6	S235	SR EN 10219	2		154	-	2,52	0,78	
P4	Pb 50x5	S235	SR EN 10058	1		265	-	1,96	0,52	
P5	Pb 100x5	S235	SR EN 10058	1		265	-	3,93	1,04	
P8	Pb 50x5	S235	SR EN 10058	2		120	-	1,96	0,47	
P9	Pb 100x5	S235	SR EN 10058	2		120	-	3,93	0,94	
P11	L 60x60x5	S235	SR EN 10058	1		1071	-	4,57	4,89	
P15	L 60x60x5	S235	SR EN 10058	1		60	-	4,57	0,27	
P17	L 60x60x5	S235	SR EN 10058	1		60	-	4,57	0,27	
P25	Tv Ø42x2,6	S235	SR EN 10219	1		2684	-	2,52	6,76	
P26	Pb 50x5	S235	SR EN 10058	1		2795	-	1,96	5,48	
P30	Pb 100x5	S235	SR EN 10058	1		2795	-	3,93	10,98	
P31	Tv Ø42x2,6	S235	SR EN 10219	1		3638	-	2,52	9,17	
P34	Pb 50x5	S235	SR EN 10058	1		3860	-	1,96	7,57	
P35	Pb 100x5	S235	SR EN 10058	1		3860	-	3,93	15,17	
P36	Tv Ø42x2,6	S235	SR EN 10219	2		7438	-	2,52	37,49	
P37	Pb 50x5	S235	SR EN 10058	2		7670	-	1,96	30,07	
P38	Pb 100x5	S235	SR EN 10058	2		7670	-	3,93	60,29	
P39	Pb 50x5	S235	SR EN 10058	2		9700	-	1,96	38,02	
P40	Pb 100x5	S235	SR EN 10058	2		9700	-	3,93	76,24	
P42	Tv Ø42x2,6	S235	SR EN 10219	2		9700	-	2,52	48,89	
P59	Tv Ø42x2,6	S235	SR EN 10219	4		141	-	2,52	1,42	
P127	L 60x60x5	S235	SR EN 10058	40		1071	-	4,57	195,78	
P138	Tv Ø42x2,6	S235	SR EN 10219	1		910	-	2,52	2,29	
P159	Placa	S235	SR EN 10029-2011	41	8	70	160	0,70	-	28,84
P164	L 60x60x5	S235	SR EN 10058	4		50	-	4,57	0,91	
P165	L 60x60x5	S235	SR EN 10058	4		100	-	4,57	1,83	
Total (kg) - incluzand 3% sudura										604

Extras de suruburi						
Positie	Nume	Grupa	Norma Produs	Buc.	Greutate	
M10	Surub	10,9	SR EN ISO 4017:2011	1	80	0,06
	Piulita	10	SR EN ISO 4032:2013	1	-	0,01
	Saiba	C	SR EN ISO 7090:2002	2	-	0,01
M10	Surub	10,9	SR EN ISO 4017:2011	24	40	0,04
	Piulita	10	SR EN ISO 4032:2013	24	-	0,01
	Saiba	C	SR EN ISO 7090:2002	24	-	0,01
Total (kg)						0,09

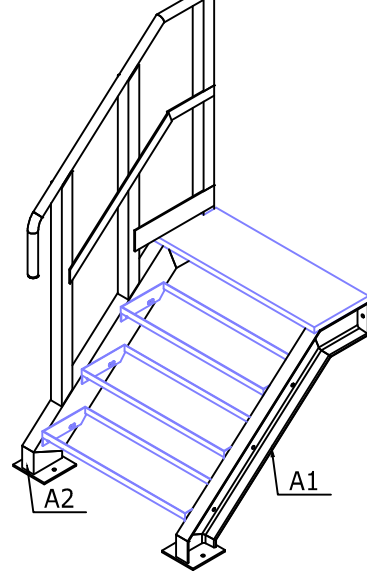
Necesar ancore mecanice :
• ancore mecanice M12x90:82buc;

2

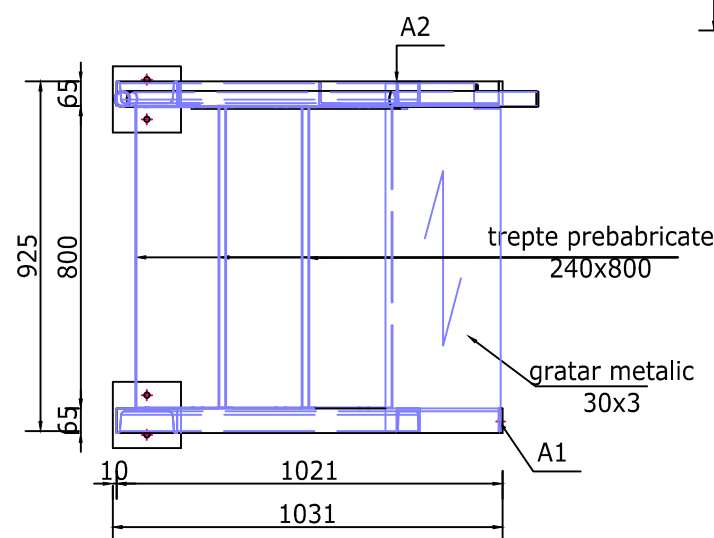
- NOTE :**
- CATEGORIA DE IMPORTANTA "C" conform HG 766/1997;
 - CLASA DE IMPORTANTA "III" conform P100-1/2013;
 - CONSTRUCTIA ESTE AMPLASATA IN ZONA SEISMICA CU ACCELERATIA TERENULUI PENTRU PROIECTARE $a_g = 0,30g$ SI PERIODA DE CONTROL(DE COLT) $T_c = 1,6 s$ - conform P100 - 1/2013;
 - DOMENIUL DE VERIFICARE AZ;
- NOTE STRUCTURI METALICE:**
- TOATE STRUCTURILE METALICE VOR FI REALIZATE DIN S 235 J2;
 - TOATE ELEMENTELE METALICE SE INCADREAZA IN CATEGORIA "B" DE EXECUTIE (CONF. STAS 767/0-88);
 - CLASA DE ACCEPTABILITATE A SUDURILOR ESTE "C" (CONF. C150-99 TABEL 5);
 - SUDURILE DE COLT NESPECIFICATE IN DESEN VOR AVEA GROSIMEA 0.7 DIN CEL MAI SUBTIRE ELEMENT IMBINAT IAR LUNGIMEA SUDURII VA FI PE TOATA SUPRAFATA DE CONTACT;
 - PROTECTIA ANTICOROZIVA : GRUNDUITA (NUMARUL TOTAL DE STRATURI 2, AVAND GROSIMEA TOTALA 80µm) SI VOPSITA (NUMARUL DE STRATURI 3-5, AVAND GROSIMEA TOTALA 200µm);
 - CLASA DE COROZIVITATE : "C3" CONFORM CU GP 121/2013;
 - GRADUL DE PREGATIRE A SUPRAFETELOR : "Sa2,5", "PSa2,5" CONFORM TABEL 4.2 DIN GP 121/2013.
 - SISTEM DE ACOPERIRE CU DURABILITATE MARE (H) > 15 ANI CONFORM SR EN ISO 12944-1.

02	Emis pentru Construire	03.2020	Ing.R. Brutaru	Ing.M.Voicu
01	Emis pentru construire	03.2019	Ing.R. Brutaru	Ing.M. Scurtu
00	Prima revizie	12.2018	Ing.R. Brutaru	Ing.M. Scurtu
Rev.	Denumirea modificarii	Data	Intocmit	Verificat
Beneficiar:		CONPET S.A.		Specialitate Doc.:
Instalatie:		STATIE DE POMPARE POTLOGI		Format
Scara:		Denumire desen		Faza
1 : 20		Plan Balustrada Cuva de Retenție pentru Claviatura Pompe,		PT+DE

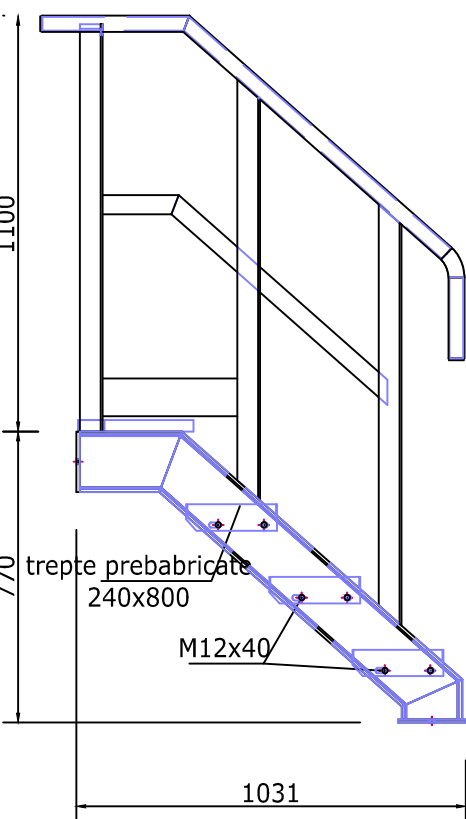
Scara acces cuva
-izometrie-



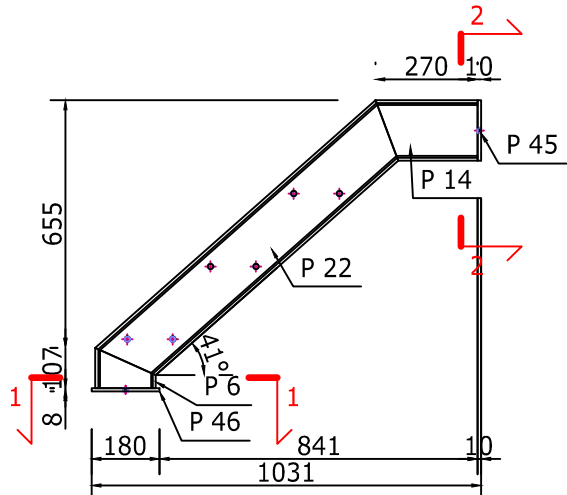
Scara acces cuva - vedere de sus
scara 1:20



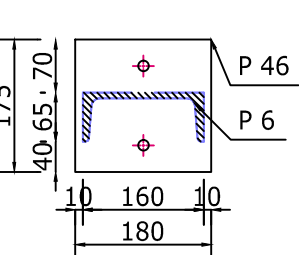
Scara acces cuva -vedere laterala
scara 1:20



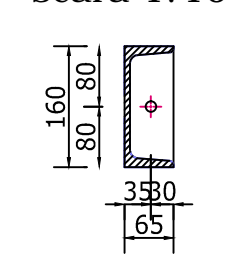
Absamblul A1 - vedere laterala
scara 1:20



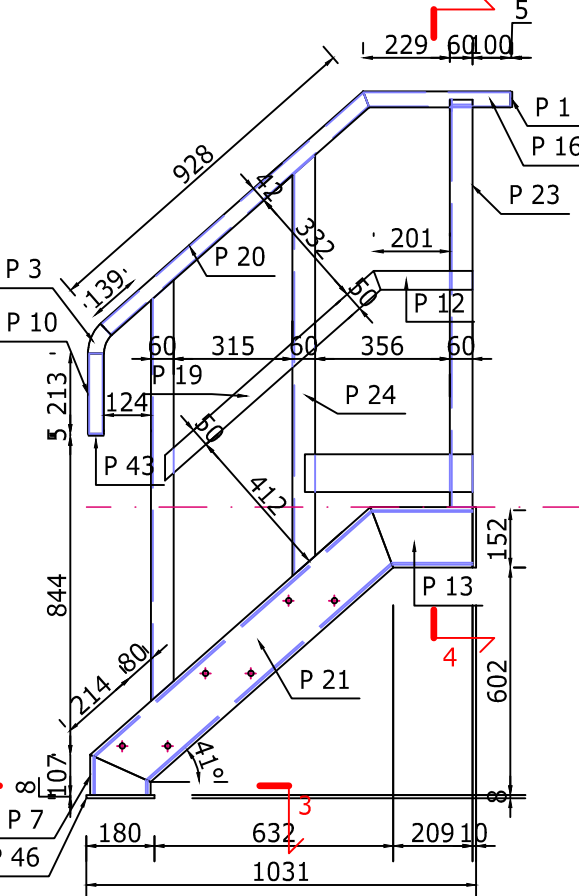
Sectioniune 1-1
scara 1:10



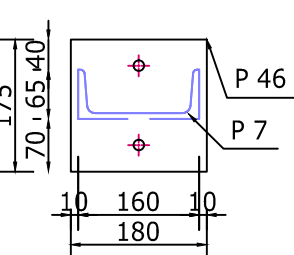
Sectioniune 2-2
scara 1:10



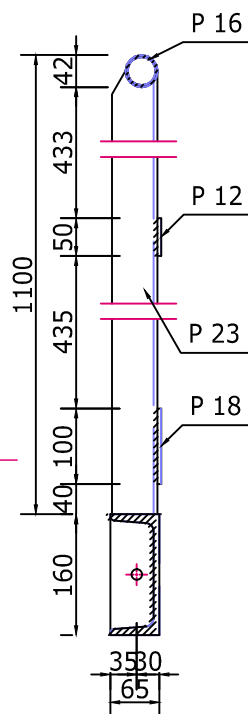
Absamblul A2 - vedere laterala
scara 1:20



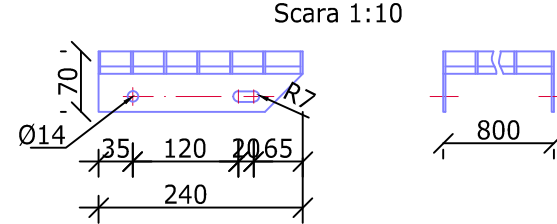
Sectioniune 3-3
scara 1:10



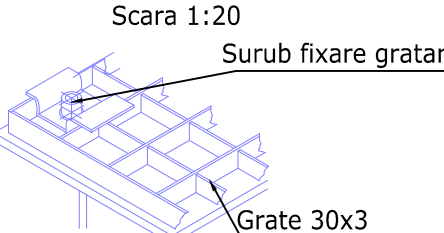
Sectioniune 4-4
scara 1:10



Detaliu Treapta
Scara 1:10



Detaliu fixare gratar
Scara 1:20



Lista de materiale trepte scara							
Position	Name/ Nume	Pcs. Buc.	Dimensions (mm)			Weight / Greutate	
						kg/pcs	Total
	Straitread/ Treapta	3	70	240	800	6.72	20.16
Total for 1 ladder (kg)							20.2

2

Extras de organe de asamblari							
Pozitie	Nume	Grupa	Norma Produs	Buc.	Dimensiuni (mm)	Greutate	
						kg/pcs	Total
M12	Bolt	8,8	SR EN ISO 4017:2011	12	40	0,05	0,60
	Nut	8	SR EN ISO 4032:2013	12	-	0,02	0,18
	Washer	C	SR EN ISO 7090:2002	12	-	0,005	0,06
Total							1



Extras de materiale scara acces								
Pos.	Nume	Material	Norma Produs	Buc.	Dimensiuni (mm)	Greutate		
						kg/pcs	kg/m	Total
P1	Plate	S235 J2	SR EN 10029-2011	1	5 40 40	0,06	-	0,06
P3	Tv Ø 48x3,2	S235 J2	SR EN 10219-2:2006	1	71	-	3,09	0,22
P6	UPN160	S235 J2	SR EN 10279-2002	1	107	-	18,76	2,01
P7	UPN160	S235 J2	SR EN 10279-2002	1	107	-	18,76	2,01
P10	Tv Ø 48x3,2	S235 J2	SR EN 10219-2:2006	1	213	-	3,09	0,66
P12	Pb 50x5	S235 J2	SR EN 10058:2004	1	261	-	1,96	0,51
P13	UPN160	S235 J2	SR EN 10279-2002	1	270	-	18,76	5,07
P14	UPN160	S235 J2	SR EN 10279-2002	1	270	-	18,76	5,07
P16	Tv Ø 48x3,2	S235 J2	SR EN 10219-2:2006	1	389	-	3,09	1,20
P18	Pb 100x5	S235 J2	SR EN 10058:2004	1	444	-	3,93	1,74
P19	Pb 50x5	S235 J2	SR EN 10058:2004	1	781	-	1,96	1,53
P20	Tv Ø 48x3,2	S235 J2	SR EN 10219-2:2006	1	927	-	3,09	2,86
P21	UPN160	S235 J2	SR EN 10279-2002	1	989	-	18,76	18,55
P22	UPN160	S235 J2	SR EN 10279-2002	1	989	-	18,76	18,55
P23	L60x50x5	S235 J2	SR EN 10056-1	1	1079	-	4,57	4,93
P24	L60x50x5	S235 J2	SR EN 10056-1	2	1114	-	4,57	10,18
P43	Plate	S235 J2	SR EN 10029-2011	1	5 40 40	0,06	-	0,06
P45	Plate	S235 J2	SR EN 10029-2011	2	10 65 180	0,92	-	1,84
P46	Plate	S235 J2	SR EN 10029-2011	2	8 175 180	1,98	-	3,96
Total (kg) - including 3% weld								83

NOTE :

- CATEGORIA DE IMPORTANTA "C" conform HG 766/1997;
- CLASA DE IMPORTANTA "III" conform P100-1/2013;
- CONSTRUCTIA ESTE AMPLASATA IN ZONA SEISMICA CU ACCELERATIA TERENULUI PENTRU PROIECTARE ag = 0.30g SI PERIOADA DE CONTROL(DE COLT) Tc = 1.6 s - conform P100 - 1/2013;
- DOMENIUL DE VERIFICARE A2;

NOTE STRUCTURI METALICE:

- TOATE STRUCTURILE METALICE VOR FI REALIZATE DIN S 235 J2;
- TOATE ELEMENTELE METALICE SE INCADREAZA IN CATEGORIA "B" DE EXECUTIE (CONF. STAS 767/0-88);
- CLASA DE ACCEPTABILITATE A SUDURILOR ESTE "C" (CONF. C150-99 TABEL 5);
- SUDURILE DE COLT NESPECIFICATE IN DESEN VOR AVEA GROSIMEA 0.7 DIN CEL MAI SUBTIRE ELEMENT IMBINAT IAR LUNGIMEA SUDURII VA FI PE TOATA SUPRAFATA DE CONTACT;
- PROTECTIA ANTICOROZIVA : GRUNDUITA (NUMARUL TOTAL DE STRATURI 2 , AVAND GROSIMEA TOTALA 80µm) SI VOPSITA (NUMARUL DE STRATURI 3-5, AVAND GROSIMEA TOTALA 200µm).
- CLASA DE COROZIVITATE : "C3" CONFORM CU GP 121/2013;
- GRADUL DE PREGATIRE A SUPRAFETELOR : "Sa2.5" , "PSa2,5" CONFORM TABEL 4.2 DIN GP 121/2013.
- SISTEM DE ACOPERIRE CU DURABILITATE MARE (H) > 15 ANI CONFORM SR EN ISO 12944-1.

02	Emis pentru Construire	03.2020	Ing.R. Brutaru	Ing.M.Voicu		
01	Emis pentru construire	03.2019	Ing.R. Brutaru	Ing.M. Scurtu		
00	Prima revizie	12.2018	Ing.R. Brutaru	Ing.M. Scurtu		
Rev.	Denumirea modificarii	Data	Intocmit	Verificat		
 <div>RIA ENGINEERING & CONSULTING 107005 BERTEA, SAT BERTEA, 812 100015, PLOIESTI, IL CARAGIALE 49 TELEFON: +40 244 471 669 email: office@riaengineering.ro</div>		 <div>COMPET S.A. Str. Anul 1848, nr. 1-3, 100559, PLOIESTI,</div>		Nr. proiect: B.031.007	Desen - Nr.: CS-PLN-216	Rev. 02
Beneficiar:		COMPET S.A.		Specialitate Doc.:	Format	
Instalatie:		STATIE DE POMPARE POTLOGI		CIVIL	1.25-A2	
Scara:		Denumire desen			Faza	
1 : 20		Plan Balustrada Cuvă de Retentie pentru Claviatura Pompe,			Pag.4/4 PT+DE	